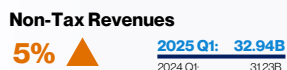
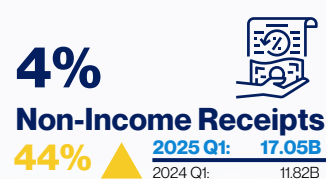
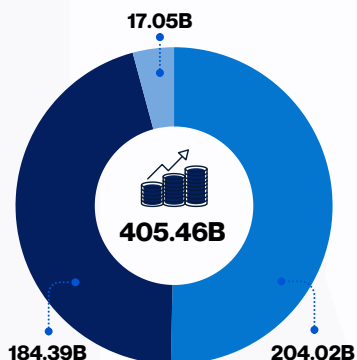


2025 Local Government Units' Quarter 1 Financial Performance

Quarter-on-Quarter Analysis



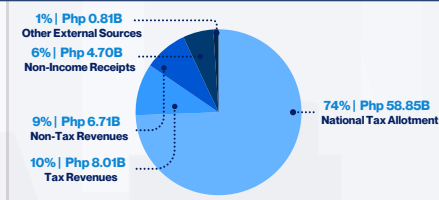
INCOME PROFILE



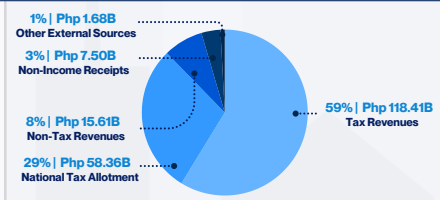
As of Q1 FY2025, **external revenues**, which include the National Tax Allotment (NTA), are the primary contributor to LGUs' revenues, constituting **50%** of the total revenues. LGUs' local revenue collections already reached **Php 184.39 billion**.



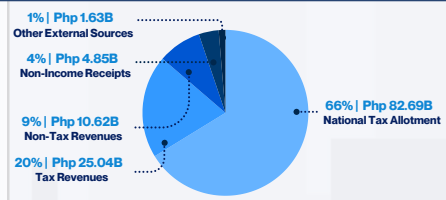
Php 79.07 billion
total income of provinces



Php 201.56 billion
total income of cities



Php 124.82 billion
total income of municipalities



Php 58.04 billion
Real Property Tax
5% ▲ 2024 Q1: 55.16B



Php 93.41 billion
Local Business Tax
9% ▲ 2024 Q1: 85.77B



Php 25.23 billion
Fees and Charges
7% ▲ 2024 Q1: 23.54B



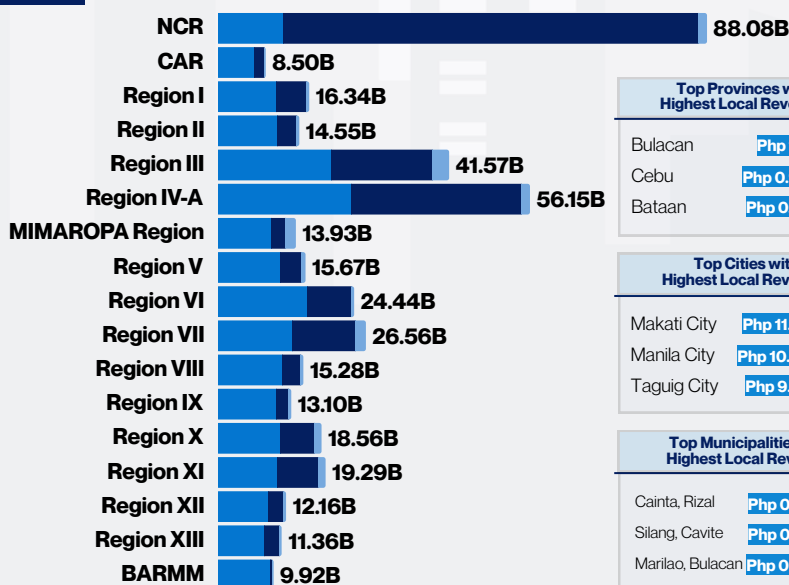
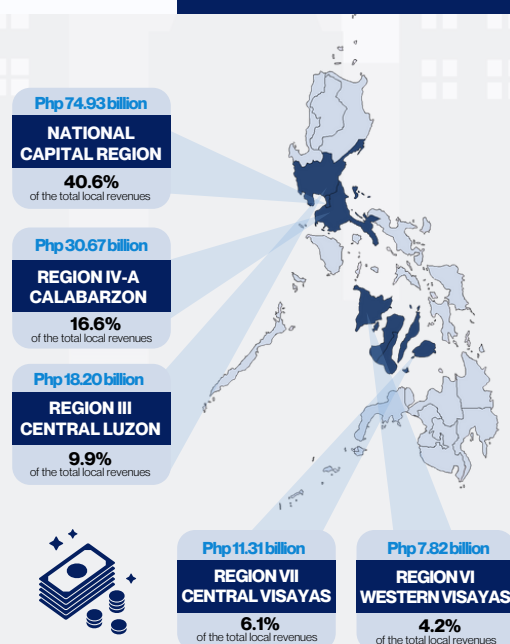
Php 6.27 billion
Receipts from Economic Enterprises
1% ▲ 2024 Q1: 6.24B



Php 1.44 billion
Other Receipts
-1% ▼ 2024 Q1: 1.45B

Local business taxes contributing 51% to the LGUs' total revenues from local sources, reached **Php 93.41 billion**, an increase of 9% from Q1 FY2024 to Q1 FY2025.

TOP REGIONS WITH HIGHEST LOCAL REVENUES



Top Provinces with Highest Local Revenues

Bulacan	Php 1.0 billion
Cebu	Php 0.95 billion
Bataan	Php 0.81 billion

Top Cities with Highest Local Revenues

Makati City	Php 11.73 billion
Manila City	Php 10.39 billion
Taguig City	Php 9.75 billion

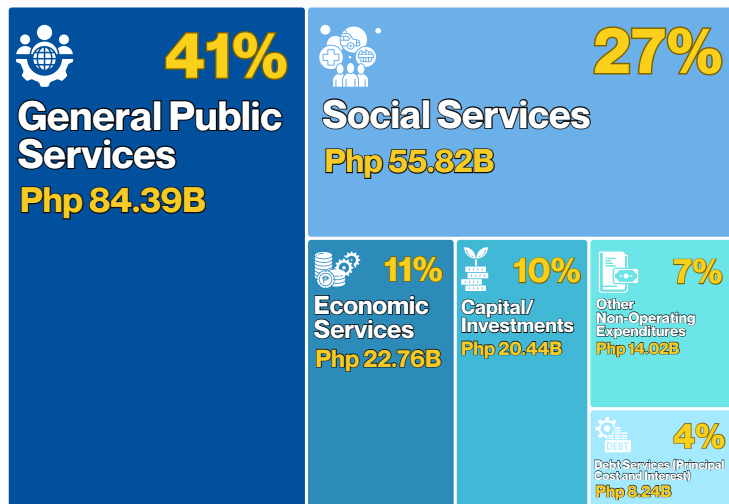
Top Municipalities with Highest Local Revenues

Cainta, Rizal	Php 0.78 billion
Silang, Cavite	Php 0.52 billion
Marilao, Bulacan	Php 0.49 billion

External Revenues Local Revenues Non-Income Receipts

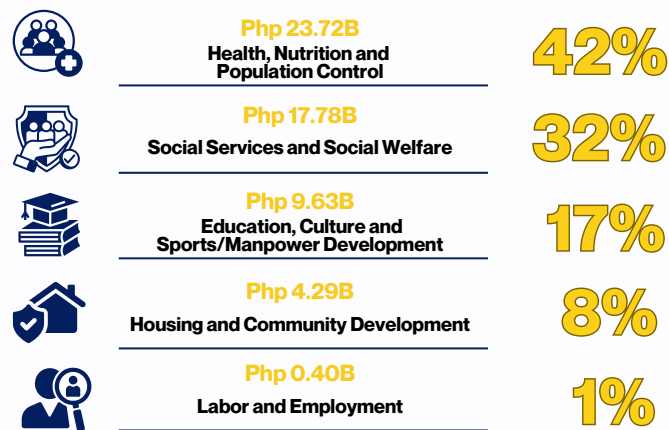


EXPENDITURES PROFILE



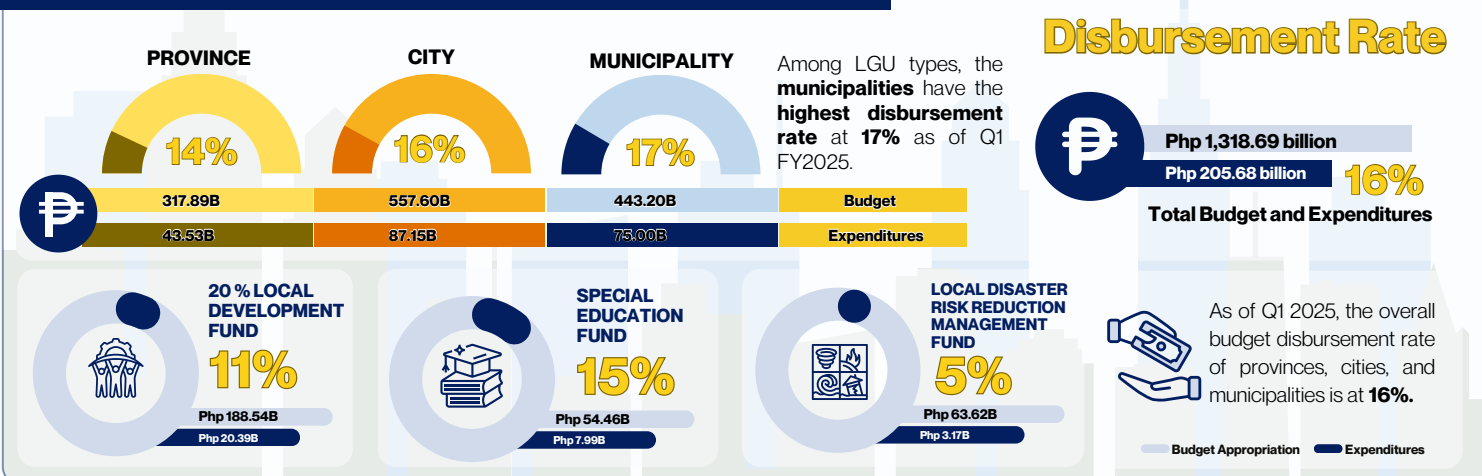
Expenditures as of Q1 FY2025 are mostly for **general public services** at 41% of the total expenditures while the **debt services**, including the principal cost and interest expenses is the lowest at only 4%.

SOCIAL SERVICES

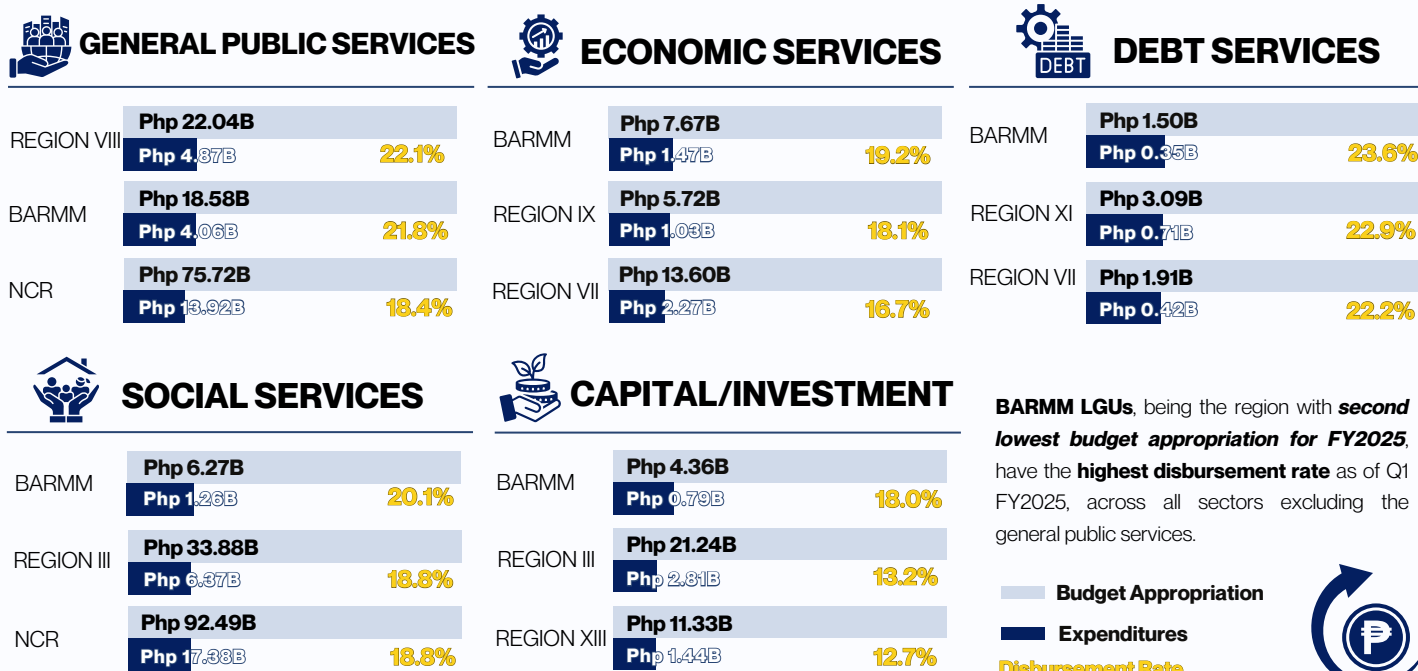


In the social services sector, projects and programs under **health, nutrition and population control** got the highest spending at 42% of the total social services expenditures as of Q1 FY2025.

BUDGET AND EXPENDITURES



TOP REGIONS WITH HIGHEST BUDGET DISBURSEMENT RATE BY SECTOR, Q1 FY2025



* Based on the Preliminary Quarter 1 FY2025 Statement of Receipts and Expenditures (SRE) Report of LGUs, extracted as of April 16, 2025.



BLGF.GOV.PH



@BLGFPH